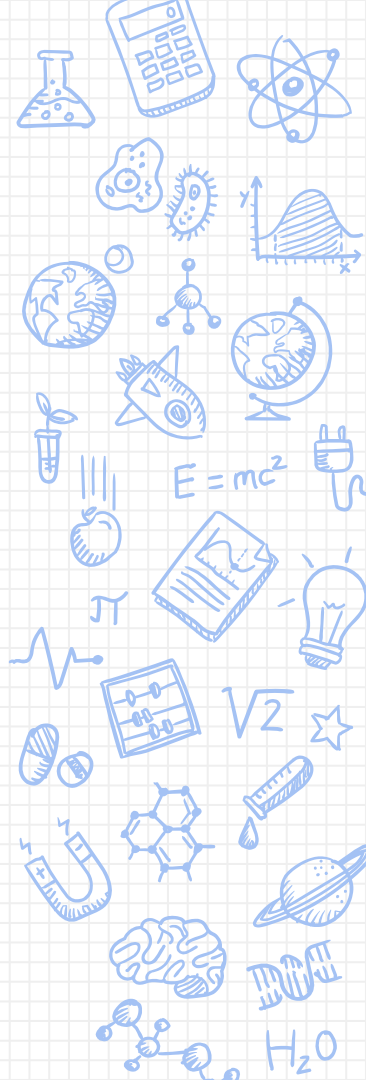




Welcome!

Capital City High School
9TH GRADE
2019-20 ENROLLMENT



Goals for Today

- ✗ Learn what core classes are required
- ✗ Discover what electives are available
- ✗ Understand which classes fit my career interest
- ✗ Complete the enrollment card and have it ready to take home to show parents
 - ✗ (Make a copy of it for counselors)

Handouts

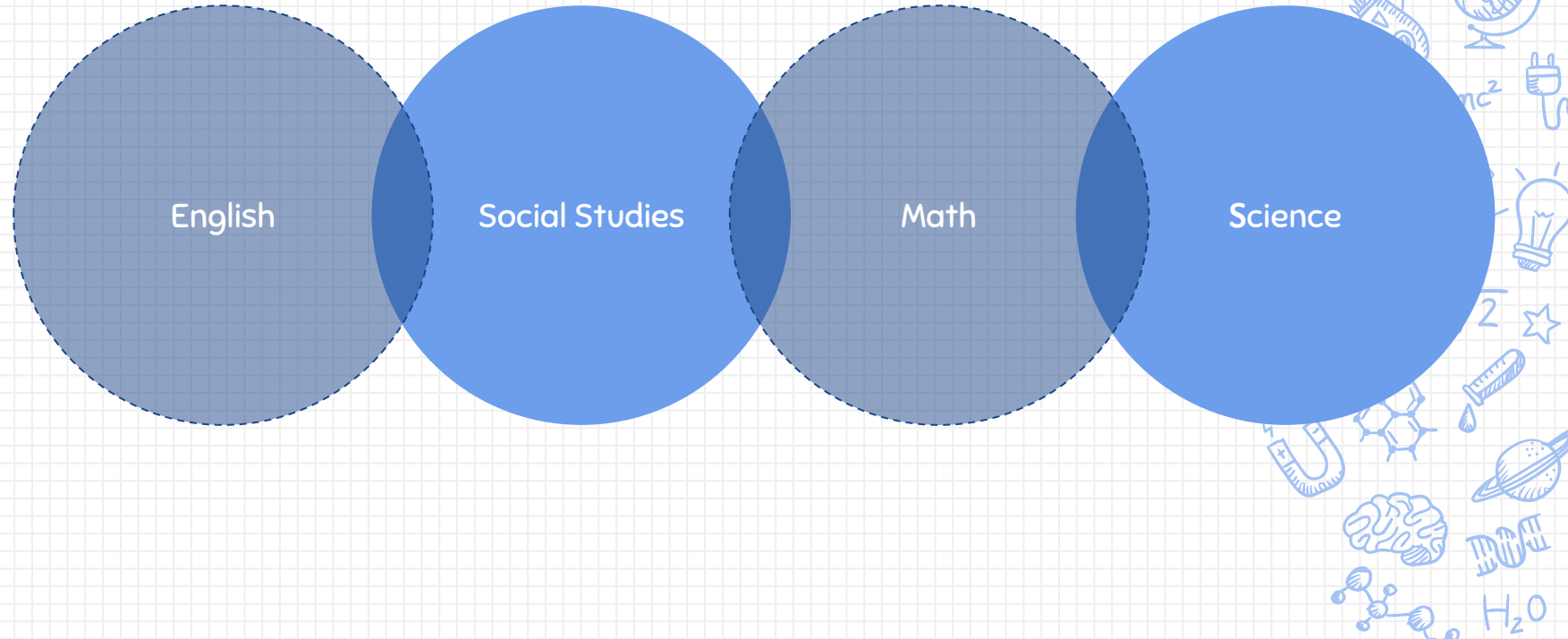
- ✗ Freshman Planning Guide
- ✗ Enrollment Card
- ✗ Welcome Letter





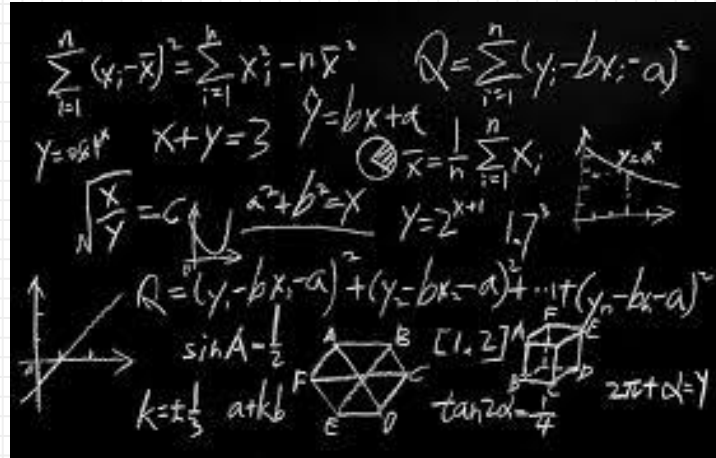
Please get out your planning guide and enrollment card now

Core Classes (Required)



Math

- ✗ Algebra 1A (1.0)
- ✗ Algebra I (1.0)
- ✗ Geometry (1.0)
- ✗ Algebra II (1.0)



- ✗ If you are interested in taking more than one, please ask counselors

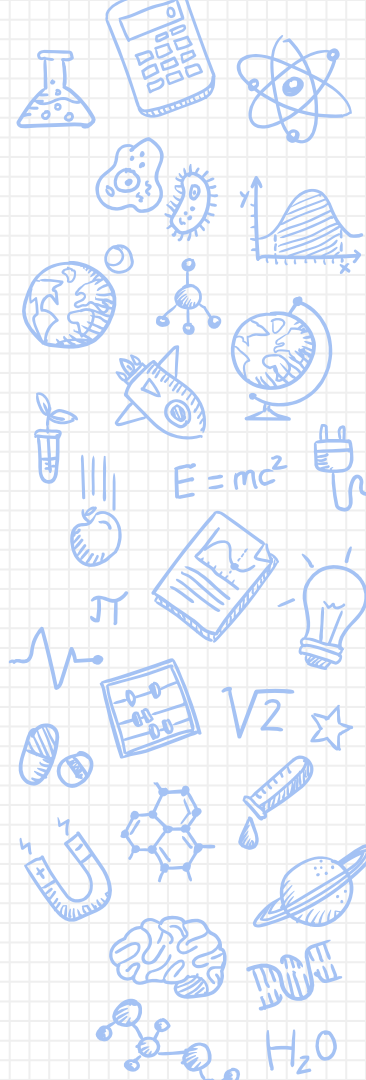


Science

- ✗ Physical Science (1.0)
- ✗ PLTW Principles of Biomedical Science (1.0)
 - ✗ Teacher recommendation only

Required Elective

- ✗ Study Skills (1.0)



Electives Options

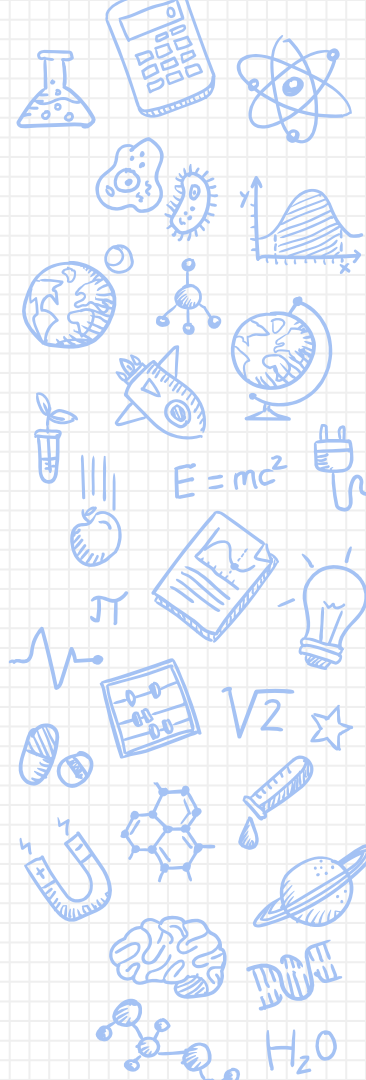
Social Studies

- ✗ Geo Asia/Africa/Australia (0.5)
- ✗ Geo. North & South America (0.5)
- ✗ Revolution and War (0.5)
- ✗ American West (0.5)
- ✗ American Civil War (0.5)

ELA

- ✗ Journalistic Writing (1.0)
- ✗ Speech I (0.5)
- ✗ Debate I (0.5)

SOCIAL
STUDIES



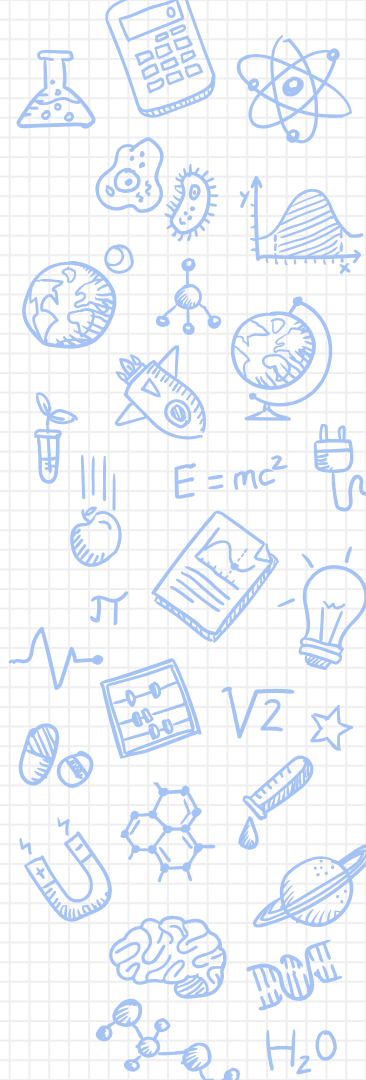
Physical Education and Health

Physical Education (1.0 credit required to graduate)

- ✗ Boys PE (0.5)
- ✗ Girls PE (0.5)
- ✗ Body Conditioning (0.5)
- ✗ Ath. Advanced Strength Training (1.0)
 - ✗ Highly recommended for those playing a school sport

Health

- ✗ Health (GRAD REQUIREMENT, 0.5)
- ✗ Athletic Training (0.5)



Music Classes (Fine Art)

Band

- ✗ Marching Band (0.5)
- ✗ Concert Band (1.0)
- ✗ Symphonic Band (audition only)

Choir

- ✗ Choir (1.0)
- ✗ Chorale (audition only)

Orchestra

- ✗ Concert Orchestra (1.0)
- ✗ Symphonic Orchestra (audition only)





Fine Arts

- ✗ Drama (0.5)
- ✗ Competitive Speaking and Interp. (1.0)
- ✗ Intro to Photography (0.5)
- ✗ Art I (1.0)
- ✗ Printmaking (0.5)
- ✗ 3-D Art (0.5)
- ✗ History of Jazz, Pop, and Rock (0.5)
- ✗ Music Appreciation (0.5)

World Languages

Foreign Language

- ✗ Latin I (1.0)
- ✗ French I (1.0)
- ✗ Spanish I (1.0)
- ✗ Chinese I (1.0)
- ✗ German I (1.0)



Classical Studies

- ✗ Rome (1.0)
- ✗ Greece I (1.0)

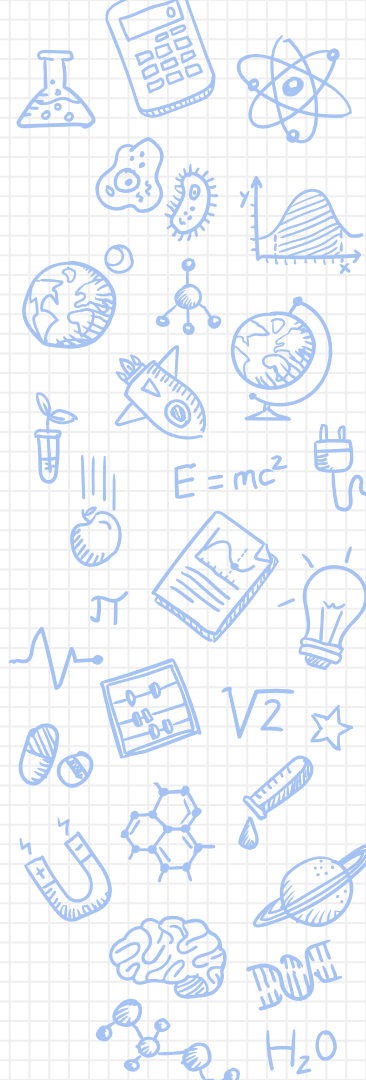


Practical Arts

Family and Consumer Sciences

- ✗ Foods and Nutrition I (0.5)
- ✗ Textiles for Living (0.5)
- ✗ Child Development (0.5)
- ✗ Interior Design (0.5)
- ✗ Intro to Fashion Merchandise (0.5)





Practical Arts– Misc

- ✗ PLTW Intro to Engineering Design (1.0)
- ✗ Intro to Agriculture (1.0)
- ✗ Drivers Ed– S1 or S2 (0.5)
 - ✗ Must be 15 before class starts

General Elective

- ✗ Intro to Human Services (0.5)
- ✗ ESOL I (1.0)

Credits Freshman Year

Core	4	
Elective	3	Extra .5 for Marching Band
Total	7	7.5 for Marching Band



State of Missouri Graduation Requirements

4 units of English

3 units of Math

3 units of Social Studies

3 units of Science

.5 units of Health

.5 Personal Finance

1 unit of PE


1 unit of Fine Arts

1 unit of Practical Art

Progression to next Grade Level

Sophomore	6 credits
Junior	12 credits
Senior	18 credits



A decorative border of various science-related icons surrounds the page. In the top-left corner, there is a Bohr model of an atom, a beaker with a chemical reaction, the chemical formula H₂O, a globe, a hand holding a pencil, a rocket, and a molecular structure. In the top-right corner, there is a calculator, a hexagonal molecular structure, a globe, a plug, a cell, a book, a star, and a test tube. In the bottom-left corner, there is a lightbulb, a brain, a molecular structure, an abacus, a graph with axes, a test tube, and the equation E=mc². In the bottom-right corner, there is a magnet, a hexagonal molecular structure, a planet, a rocket, a DNA helix, a star, a molecular structure, and the chemical formula H₂O.

25

Credits Needed to Graduate

Important Links

Capital City Counseling webpage:
<https://www.jcschools.us/domain/3851>

Google Classroom, Class of 2023:
[yyaoj9r](#)

Contact Information

Mrs. Marshall

Mr. Ritter

Mrs. Schaefer

573.659.3130

